



UNICARE

COMPLEX CARE SPECIALIST



Unicare Complex Care Specialist
Contextual Safeguarding Division

www.unicarecomplex.co.uk

Our Vision and Values

At Unicare Complex Care Specialist, our Contextual Safeguarding Division is dedicated to ensuring the safety and well-being of young people beyond their immediate family environment. Our vision is to create a secure, supportive, and empowering space for children and adolescents, acknowledging the multifaceted nature of their lives. We are committed to safeguarding young people from extra-familial harm, which includes exploitation, violence, and abuse that occurs within their schools, peer groups, and communities.

Our values are rooted in:

- **Empathy and Respect:** Understanding the unique experiences and challenges faced by each young person.
- **Collaboration:** Working with multi-agency professionals, families, and the community to build a robust support network.
- **Innovation:** Implementing evidence-based practices and continuously improving our safeguarding strategies.
- **Integrity:** Upholding the highest ethical standards in all our interactions and interventions.
- **Hope and Empowerment:** Believing in the potential for positive change and supporting young people to achieve their fullest potential.

Our Approach

Based on the Contextual Safeguarding assessment framework, we address the safeguarding needs of young people in various settings, including school, friendships, and neighbourhoods. We integrate expert research and practices from leading professionals to develop comprehensive and effective safeguarding strategies.

Processes and Framework

1. Assessment and Identification

● Contextual Safeguarding Assessment

Using a holistic approach to identify risks and vulnerabilities in the young person's broader environment.

● Multi-Agency Collaboration

Engaging with professionals from social work, youth justice, policing, health, and education to gather comprehensive insights and develop tailored

2. Intervention and Support

● Direct Work with Young People

Providing personalised support, including one-to-one sessions, group workshops, and community activities.

● Family and Peer Engagement

Working with families and peer groups to create a supportive and protective network around the young person.

3. Safety Planning and Risk Management

● Personalised Safety Plans

Developing and implementing safety plans that address the specific needs and circumstances of each young person.

● Regular Monitoring and Review:

Continuously assessing the effectiveness of interventions and making necessary adjustments to ensure ongoing safety and support.

4. Training and Development:

Continuous Professional Development

Ensuring our team is equipped with the latest knowledge and skills through ongoing training in contextual safeguarding and related areas.

Community Education:

Raising awareness about contextual safeguarding among stakeholders and the wider community.

Expert Resources and Support

1. Contextual Safeguarding Network
2. Working Together to Safeguard Children 2023
3. NSPCC Learning
4. BASW Contextual Safeguarding
5. Childline: www.childline.org.uk | 0800 1111
6. Young Minds: www.youngminds.org.uk | Text YM to 85258
7. National Rape Crisis: www.rapecrisis.org.uk | 0808 802 9999
8. Local Safeguarding Partnerships: <https://surreyscp.org.uk>



By utilising these resources and aligning our practices with established guidelines and expert recommendations, our Contextual Safeguarding Division addresses the complex and multifaceted risks faced by young people today.



UNICARE
COMPLEX CARE SPECIALIST

Key Components of Our Framework

01

The Challenge and Context

- Recognising the systemic gaps and extra-familial routes through which young people experience harm.
- Adopting a contextual lens to understand and address these challenges.

02

Building Blocks for Change

- Crystallising ideas and articulating an ambition for a robust Contextual Safeguarding Framework.
- Creating an authorising environment by contextualising national policy frameworks.

03

Implementing and Testing

- Developing tools and roadmaps to bring context into work with children and families.
- Believing in the potential for change and embedding this belief into practice.

04

Reflecting and Planning Forward

- Evaluating the impact of our framework and planning for continuous improvement.
- Addressing the legality and ethics of contextual safeguarding to ensure responsible practice.

Looking Ahead

As we move forward, Unicare Complex Care Specialist is committed to deepening our Contextual Safeguarding Framework, fostering strategic partnerships, and enhancing our interventions. Our goal is to provide the highest quality of care and protection for young people, ensuring their safety, resilience, and overall well-being.

By integrating the principles of contextual safeguarding into every aspect of our work, we strive to create a safer, more supportive environment for all young people in our care.



Our Team

Leadership Team

Dorothy Karikari-Boateng

Clinical Director , Safeguarding Lead

with 35 years experience as a nurse, trainer & Educator, CHC commissioner, district nursing and homecare Clinical Governance.



Bonsu Sekyere

Co-Founder /CEO /Responsible Individual/Information Governance Leand

With 20 years in Senior Management roles in Health and Social Care.

Rashied Shote

Co-founder/CEO/Registered Manager/Training Expert

With 20 years experience as Health and Social care trainer and compliance.



Alex Manso

Operations Director/Registered Manager

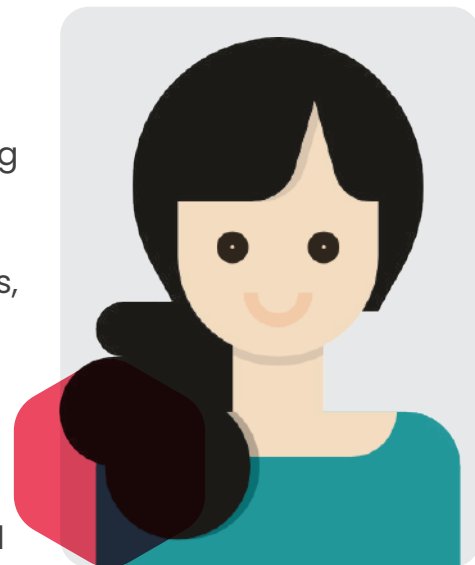
With 20 years in Senior Management roles in Health and Social Care.



Youth Workers

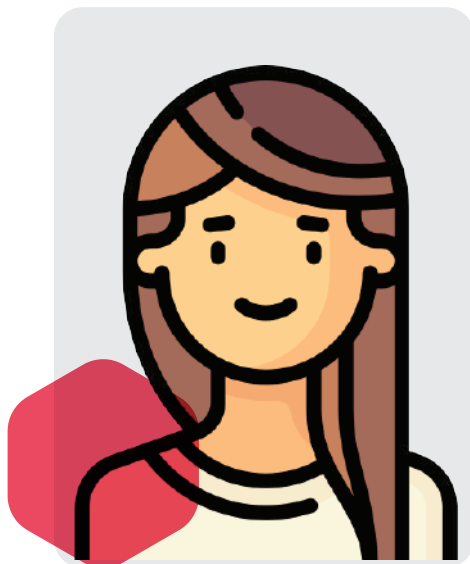
Lacey Profile

Dedicated social worker with significant experience in supporting vulnerable young people aged 11-18. Background includes working with adolescents facing contextual safeguarding issues, exploitation risks, mental health challenges, and disengagement from education. Skilled in developing individualised support plans, collaborate with multi-agency professionals to enhance young people's safety, resilience, and wellbeing. Strengths in advocacy, risk management, and relationship-building complemented by extensive training in safeguarding procedures and contextual safeguarding. Committed to continuous development, proactive and empathetic approach to empowering young individuals and their families.



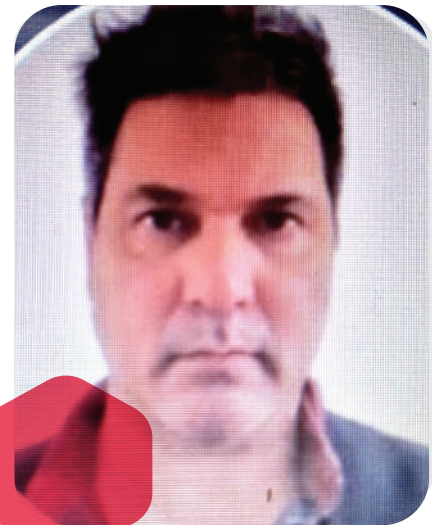
Chantel Profile

Experienced social worker with a BA degree in Social Work and 15 years of experience working with children aged 0-18. Extensive career includes roles as a nursery nurse, team leader, and social worker, with a robust foundation in child development, safeguarding, and multi-agency collaboration. Experience placements with the Youth Justice Services and Working Locality Team have deepened her expertise in contextual safeguarding and supporting young people with complex needs



Gilbert Lewis Profile

Accomplished social worker with over a decade of experience in providing dedicated support to young people aged 11-18. Specializes in addressing contextual safeguarding issues, managing exploitation risks, and promoting mental health and educational engagement. Proven expertise in creating and implementing tailored support plans, and working collaboratively with multi-agency teams to ensure the safety, resilience, and wellbeing of adolescents. Highly skilled in advocacy, risk assessment, and relationship-building, with extensive training in safeguarding and contextual safeguarding practices. Committed to ongoing professional development, Gilbert combines a proactive and compassionate approach to empower young people and their families.



Samuel Abankwah Profile

Highly experienced social worker with a strong background in supporting children and young people aged 0-18. Holds a BA in Social Work and has accumulated 15 years of hands-on experience in various roles, including nursery nurse, team leader, and social worker. Deeply knowledgeable in child development, safeguarding, and multi-agency collaboration, Samuel has honed his skills through placements with the Youth Justice Services and local teams. His work focuses on contextual safeguarding and assisting young people with complex needs, utilizing his extensive training and experience to promote their safety, resilience, and overall wellbeing. Samuel is dedicated to continuous improvement and takes a proactive, empathetic approach to his work with children and their families.



CONTACT US

Phone:

0208 239 6877

Mail:

info@unicarecruit.co.uk

www.unicarecomplex.co.uk



